



**SCOTTISHPOWER
RENEWABLES**

East Anglia ONE North and East Anglia TWO Offshore Windfarms

National Grid GIS Substation

Photomontages:

**CHVP3 – ProW between Moor Farm and
Little Moor Farm (Appendix 24.7, Figure
8 – Update)**

Applicants: East Anglia ONE North Limited and East Anglia TWO Limited

Document Reference: ExA.AS-28.D8.V1_06

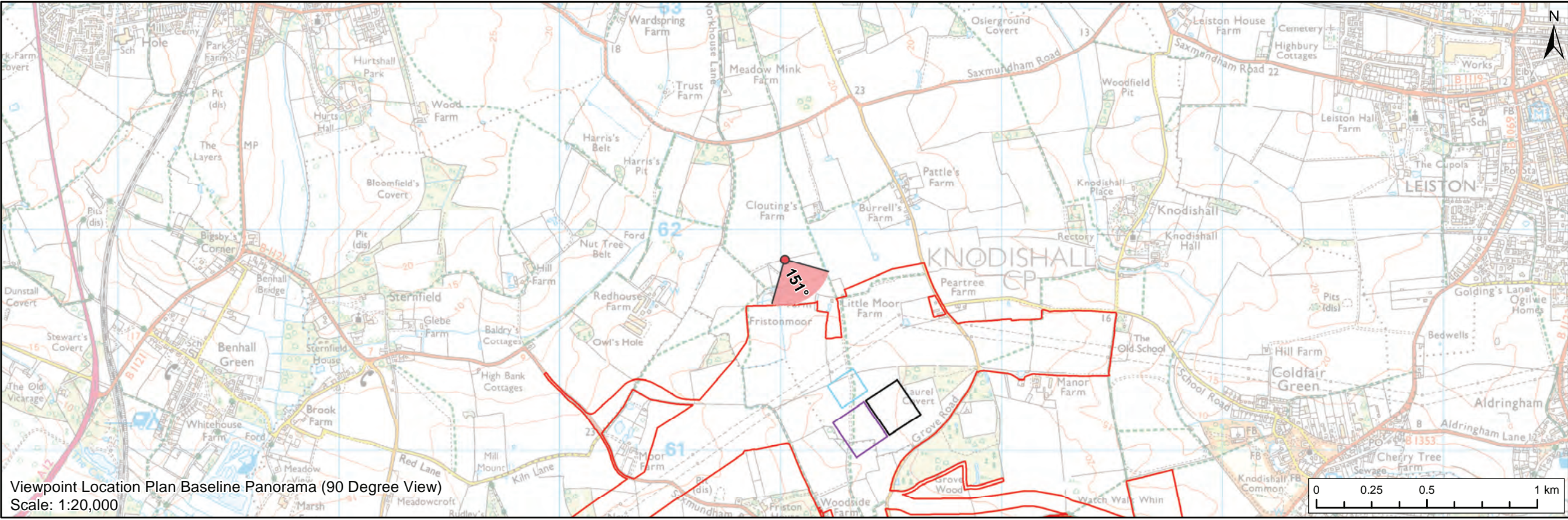
SPR Reference: EA2-DWF-ENV-REP-IBR-001095_06 & EA1N-DWF-ENV-REP-IBR-000555_06

Date: 25th March 2021

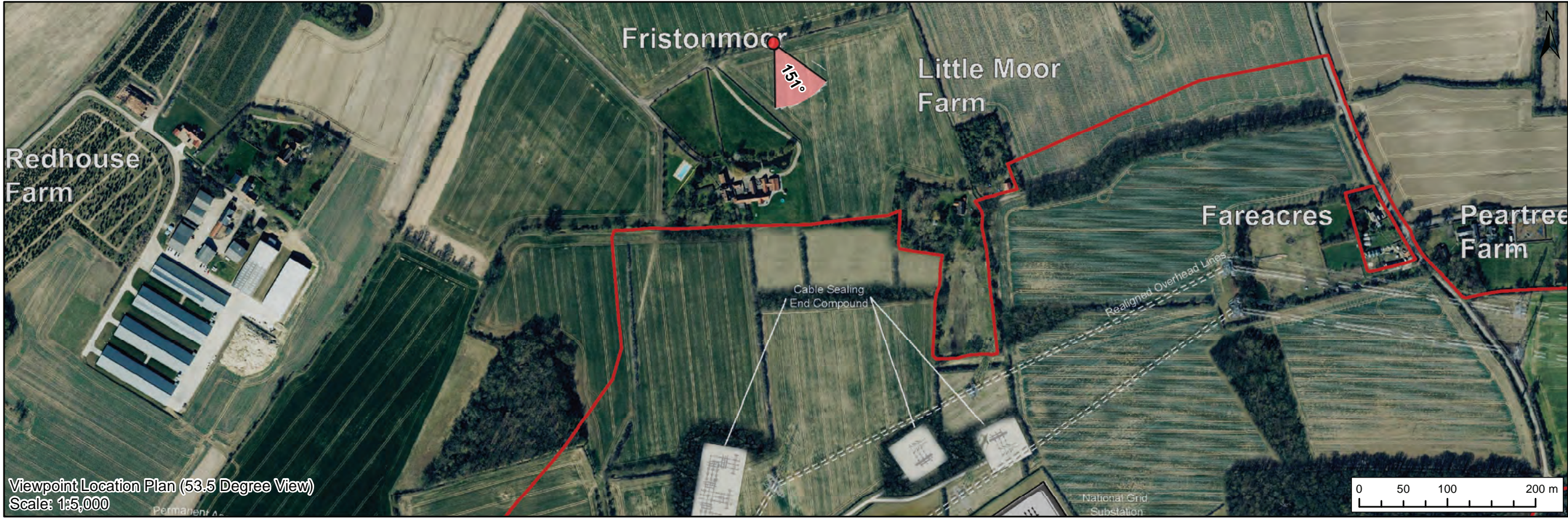
Revision: Version 1

Author: ScottishPower Renewables

Applicable to East Anglia ONE North and East Anglia TWO



Viewpoint Location Plan Baseline Panorama (90 Degree View)
Scale: 1:20,000



Viewpoint Location Plan (53.5 Degree View)
Scale: 1:5,000

Legend

- East Anglia ONE North and East Anglia TWO Onshore Development Area
- Western Substation (190m x 170m)
- Eastern Substation (190m x 170m)
- Indicative National Grid GIS Substation Location

Viewpoint:

- 90 Degree Field of View Viewpoint
- 53.5 Degree Field of View Viewpoint



Baseline Photograph (90 Degree Field of View)



				Prepared: LA	Scale @ A3
1	25/03/2021	LA	First Issue (OPEN)	Checked: SM	
Rev	Date	By	Comment	Approved: LT	

Source: © Crown copyright and database rights 2020, Ordnance Survey 0100019072.
This map has been produced to the latest known information at the time of issue, and has been produced for your information only.
Please consult with the SPN Onshore GIS team to ensure the content is still current before using the information contained on this map.
To the fullest extent permitted by law, we accept no responsibility or liability, whether in contract, tort (including negligence) or otherwise in respect of any errors or omissions in the information contained in the map and shall not be liable for any loss, damage or expense caused by such errors or omissions.

East Anglia ONE North and East Anglia TWO

CHVP3: PROW between Moor Farm and Little Moor Farm

(Appendix 24.7, Figure 8-Update)		
Rev	1	Coordinate System: BNG Datum: OSGB36
Date	25/03/21	
Figure	8a	





Visual representation of 1st year of operational phase
Photomontage of the proposed western substation and National Grid GIS substation

View that at a comfortable arm's length

OS reference:	641018 E 261864 N	Horizontal field of view:	53.5° (planar projection)	Camera:	Canon EOS 5D Mark II
Eye level:	26 m AOD	Principal viewing distance:	812.5 mm	Lens:	50mm (Canon EF 50mm f/1.4)
Direction of view:	151°	Paper size:	841 x 297 mm (half A1)	Camera height:	1.5 m AGL
		Correct printed image size:	820 x 260 mm	Date and time:	22/02/2018, 13:35:32

Contains Ordnance Survey digital data © Crown copyright, All rights reserved 2020 Licence number 0100031673

Figure: 8c
CHVP3: PROW between Moor Farm and Little Moor Farm



Visual representation of 15th year of operational phase
Photomontage of the proposed western substation and National Grid GIS substation

View that at a comfortable arm's length

OS reference:	641018 E 261864 N	Horizontal field of view:	53.5° (planar projection)	Camera:	Canon EOS 5D Mark II
Eye level:	26 m AOD	Principal viewing distance:	812.5 mm	Lens:	50mm (Canon EF 50mm f/1.4)
Direction of view:	151°	Paper size:	841 x 297 mm (half A1)	Camera height:	1.5 m AGL
		Correct printed image size:	820 x 260 mm	Date and time:	22/02/2018, 13:35:32

Contains Ordnance Survey digital data © Crown copyright, All rights reserved 2020 Licence number 0100031673

Figure: 8d
CHVP3: PROW between Moor Farm and Little Moor Farm



Visual representation of 1st year of operational phase
Photomontage of the proposed eastern substation and National Grid GIS substation

View that at a comfortable arm's length

OS reference:	641018 E 261864 N	Horizontal field of view:	53.5° (planar projection)	Camera:	Canon EOS 5D Mark II
Eye level:	26 m AOD	Principal viewing distance:	812.5 mm	Lens:	50mm (Canon EF 50mm f/1.4)
Direction of view:	151°	Paper size:	841 x 297 mm (half A1)	Camera height:	1.5 m AGL
		Correct printed image size:	820 x 260 mm	Date and time:	22/02/2018, 13:35:32

Contains Ordnance Survey digital data © Crown copyright, All rights reserved 2020 Licence number 0100031673

Figure: 8e
CHVP3: PROW between Moor Farm and Little Moor Farm





Visual representation of 1st year of operational phase
Photomontage of the proposed western substation, eastern substation and National Grid GIS substation

View that at a comfortable arm's length

OS reference:	641018 E 261864 N	Horizontal field of view:	53.5° (planar projection)	Camera:	Canon EOS 5D Mark II
Eye level:	26 m AOD	Principal viewing distance:	812.5 mm	Lens:	50mm (Canon EF 50mm f/1.4)
Direction of view:	151°	Paper size:	841 x 297 mm (half A1)	Camera height:	1.5 m AGL
		Correct printed image size:	820 x 260 mm	Date and time:	22/02/2018, 13:35:32

Contains Ordnance Survey digital data © Crown copyright, All rights reserved 2020 Licence number 0100031673

Figure: 8g
CHVP3: PROW between Moor Farm and Little Moor Farm

